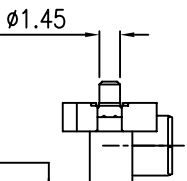
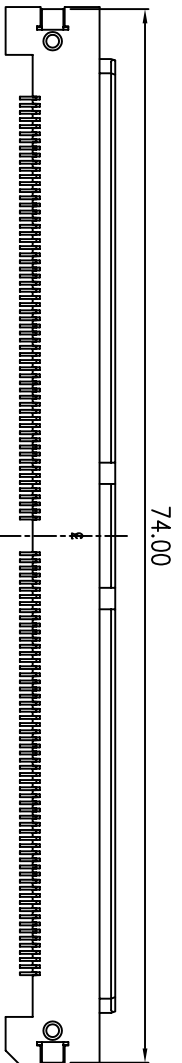
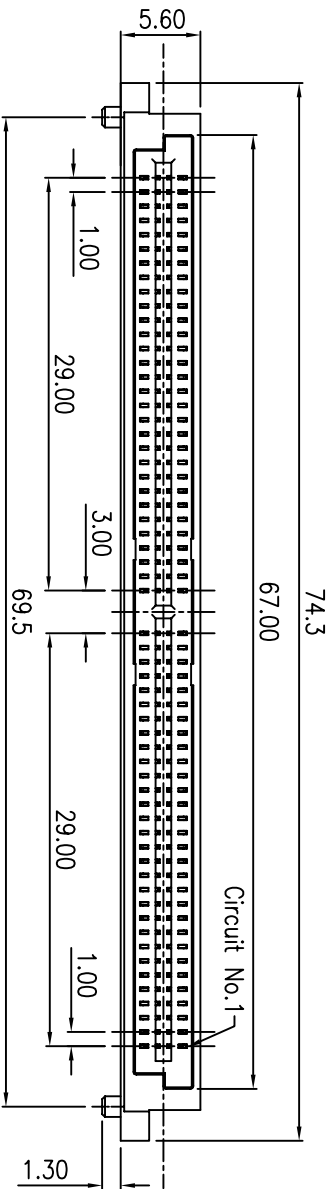
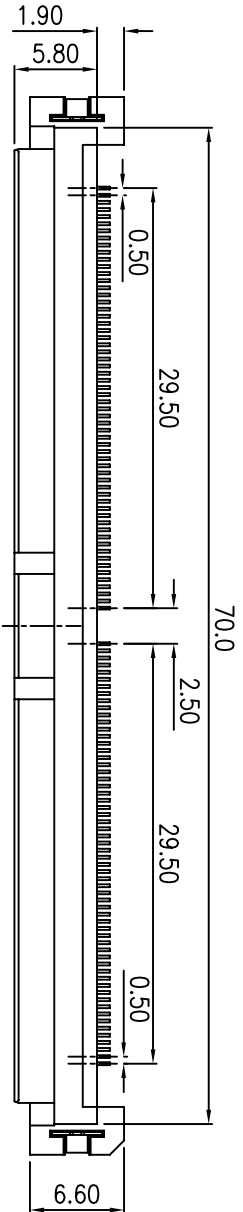


PCB PATTERN LAYOUT



NOTES:

1. MATERIAL:  
HOUSING: LCP UL94V-0  
TERMINAL: COPPER ALLOY  
FINISH: NICKEL OVER TIN-LEAD ON SOLDER TAIL  
GOLD FLASH OVER TIN-LEAD ON CONTACT AREA.  
FITTING NAIL: COPPER ALLOY  
FINISH: TIN PLATED (t=0.2)
2. THE SPECIFICATION PLS REFER TO 50144-XXXXX-XXX.

P/N LEGEND

50145-XXX X X-XXX

NO OF CKT →

PACKING →

PLATING →

1: GOLD FLASH OVER ALL  
N: MATT TIN(LEAD FREE)

XXX	Color	Material	Halogen Free
001	BLACK	HF Plastic	HF

REV	REV	REV	REV	REV
0	新圖製成	REV	08/10/06	Keen
	REVISION DESCRIPTION		DATE	SIGNATURE

一般公差 TOLERANCES X ±0.6 XX ±0.16 X ±0.25 XXX ±0.1 ANGLES 45°		宏致電子股份有限公司 Aces Electronic Co., Ltd.	
檢驗尺寸標示 SYMBOLS → INDICATE CLASSIFICATION DIMENSION → MARK IS CRITICAL DIM. → MARK IS MAJOR DIM.		品名 (ITEM) 1.0mm BTB RCPT. SMT R/A D/R TYPE 圖號 (DRAWING NO) 50145-XXXXX-XXX	製圖 (DR) '08/10/06 審核 (CHKD) Jason
表面處理 (FINISH)		比例 (SCALE) 2:1	單位 (UNITS) mm
張數 (SHEET) 1 OF 1		核對 (APPD) Jason.C	尺寸 (SIZE) A4
日期 (DATE)		圖號 (DRAWING NO)	製圖 (DR)
簽名 (SIGNATURE)		圖號 (DRAWING NO)	製圖 (DR)
日期 (DATE)		圖號 (DRAWING NO)	製圖 (DR)
簽名 (SIGNATURE)		圖號 (DRAWING NO)	製圖 (DR)